



eEF2 mouse mAb

Catalog No	YP-Ab-16107
Isotype	IgG
Reactivity	Human
Applications	WB;ICC
Gene Name	eef2
Protein Name	
Immunogen	Purified recombinant human eEF2 protein fragments expressed in E.coli.
Specificity	This antibody detects endogenous levels of eEF2 and does not cross-react with related proteins.
Formulation	Liquid in PBS containing 50% glycerol, 0.5% BSA and 0.02% sodium azide.
Source	Monoclonal, Mouse
Purification	The antibody was affinity-purified from mouse ascites by affinity-chromatography using epitope-specific immunogen.
Dilution	wb 1:5000 icc 1:200
Concentration	1 mg/ml
Purity	≥90%
Storage Stability	-20°C/1 year
Synonyms	EEF2;Eef2;EF-2;EF2;EF2_HUMAN;Elongation factor 2;Eukaryotic translation elongation factor 2;Polypeptidyl tRNA translocase;SCA26.
Observed Band	95kD
Cell Pathway	Cytoplasm . Nucleus . Phosphorylation by CSK promotes cleavage and SUMOylation-dependent nuclear translocation of the C-terminal cleavage product. .
Tissue Specificity	Brain,Cajal-Retzius cell,Epithelium,Hepatocyte,Ovary,Periph
Function	function:This protein promotes the GTP-dependent translocation of the nascent protein chain from the A-site to the P-site of the ribosome.,PTM:Diphthamide is 2-[3-carboxyamido-3-(trimethyl-ammonio)propyl]histidine. Diphthamide can be ADP-ribosylated by diphtheria toxin and by Pseudomonas exotoxin A.,PTM:Phosphorylation by EF-2 kinase completely inactivates EF-2.,similarity:Belongs to the GTP-binding elongation factor family. EF-G/EF-2 subfamily.,subunit:Component of the mRNA surveillance SURF complex, at least composed of ERF1, ERF3 (ERF3A or ERF3B), EEF2, UPF1/RENT1, SMG1, SMG8 and SMG9.,
Background	This gene encodes a member of the GTP-binding translation elongation factor family. This protein is an essential factor for protein synthesis. It promotes the GTP-dependent translocation of the nascent protein chain from the A-site to the P-site of the ribosome. This protein is completely inactivated by EF-2 kinase



phosphorylation. [provided by RefSeq, Jul 2008],

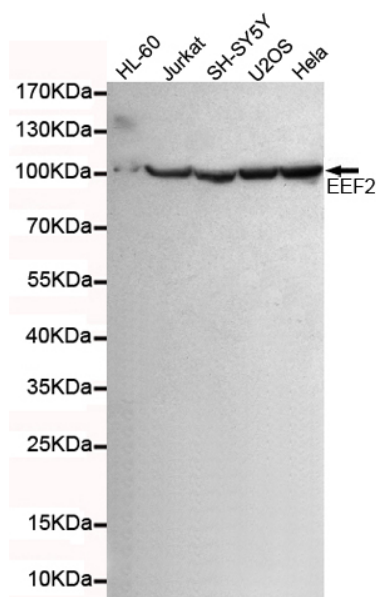
matters needing attention

Avoid repeated freezing and thawing!

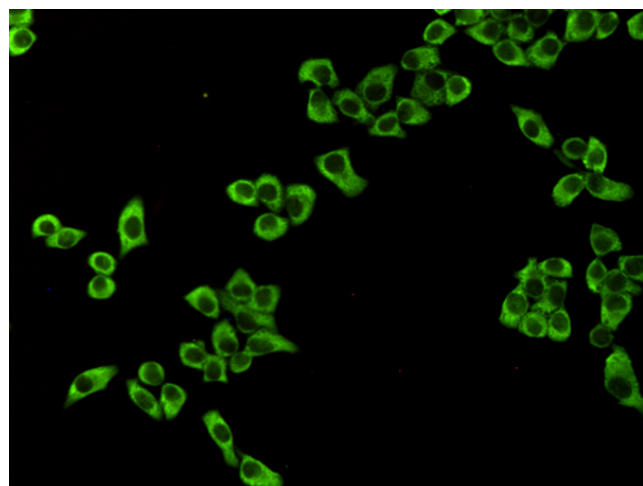
Usage suggestions

This product can be used in immunological reaction related experiments. For more information, please consult technical personnel.

Products Images



Western blot detection of eEF2 in HL-60, Jurkat, SH-SY5Y, U2OS and HeLa cell lysates using eEF2 mouse mAb (1:5000 diluted). Predicted band size: 95KDa. Observed band size: 95KDa. Exposure time: 15s.



Immunocytochemistry staining of HeLa cells fixed with -20°C Methanol and using anti-eEF2 mouse mAb (dilution 1:200).